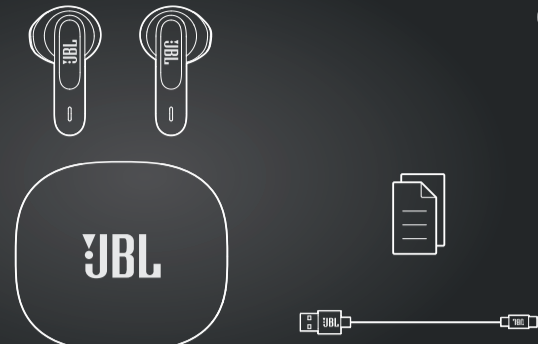


QUICK START GUIDE

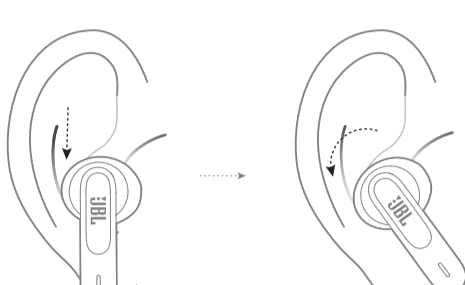
WAVE300TWS



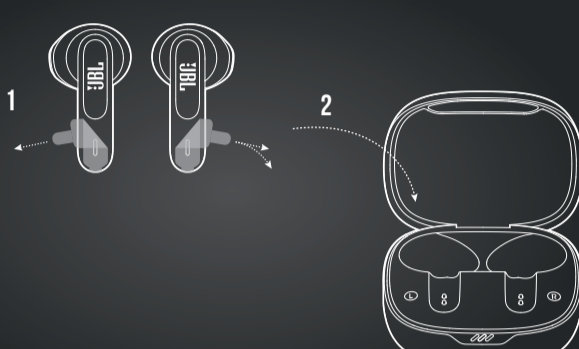
WHAT'S IN THE BOX



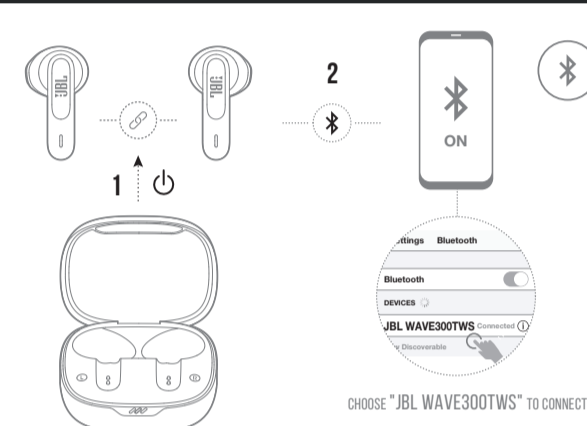
HOW TO WEAR



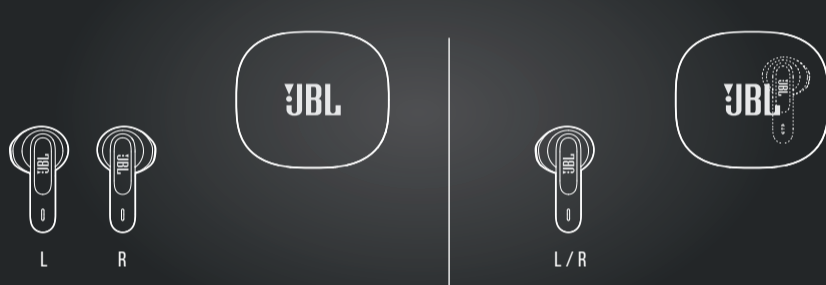
FIRST TIME USE



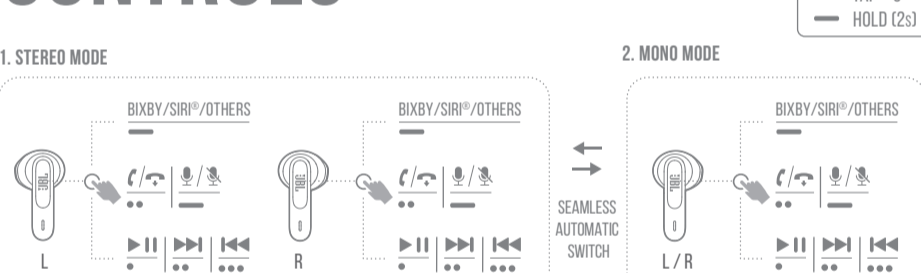
POWER ON & CONNECT



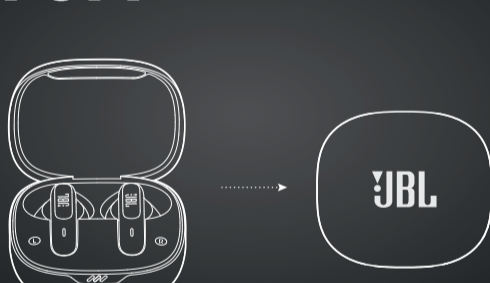
DUAL CONNECT



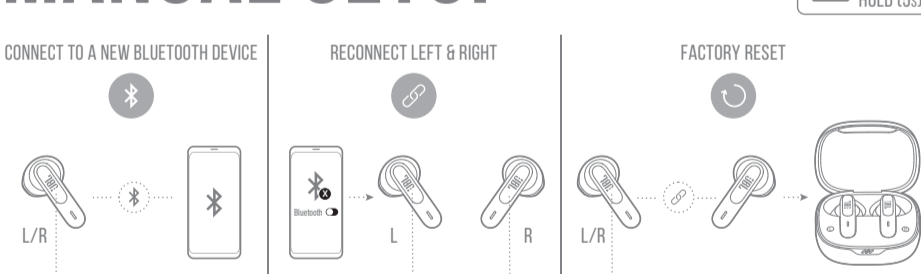
CONTROLS



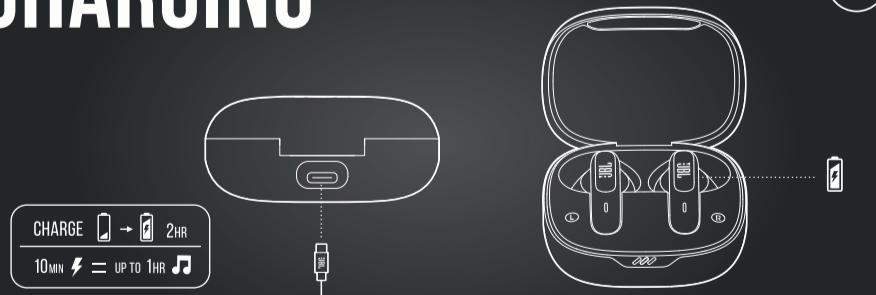
POWER OFF



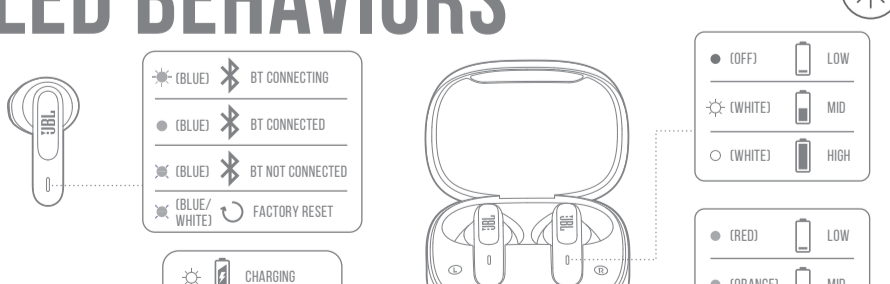
MANUAL SETUP



CHARGING



LED BEHAVIORS



TECH SPEC

Model: WAVE300TWS
Driver size: 12 mm / 0.47" Dynamic Driver
Power supply: 5V == 1A
Earbud: 3.85 g per pc (7.7 g combined) / 0.009 lbs per pc (0.017 lbs combined)
Charging case: 36 g / 0.079 lbs
Earbud battery type: Lithium-ion polymer (40 mAh / 3.85 V)
Charging case battery type: Lithium-ion polymer (500 mAh / 3.8 V)
Charging time: < 2 hrs from empty
Music playtime with BT on: up to 6 hrs
Frequency response: 20 Hz – 20 kHz
Impedance: 32 ohm
Sensitivity: 105 dB SPL @ 1 kHz
Maximum SPL: 95 dB
Microphone sensitivity: -38±2 dBV/Pa @ 1 kHz
Bluetooth version: 5.2
Bluetooth profile: A2DP V1.3 AVRCP V1.6 HFP V1.7
Bluetooth transmitter frequency range: 2.4 GHz - 2.4835 GHz
Bluetooth transmitter power: < 12 dBm
Bluetooth transmitter modulation: GFSK, π/4-DQPSK, 8-DPSK
Maximum operation temperature: 45 °C

